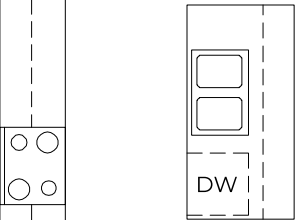


COVERED LANAI  
19'X8'

GREAT ROOM  
20'9"X18'  
10' COFFERED CEILING

PRIMARY  
BEDROOM SUITE  
20'9"X14'  
10' COFFERED CEILING

WALK-IN  
CLOSET  
12'9"X6'1"



KITCHEN  
14'3"X12'4"

CASUAL DINING  
16'9"X14'

SHWR

KNEE SPACE

PRIMARY BATH

LINEN

REF SPACE

WALK-IN PANTRY

POWDER ROOM

UP

STORAGE SLOPED CEILING

EVERY-DAY ENTRY

LAUNDRY

W/D SPACE

UP

FLEX SPACE  
14'2"X12'4"

FOYER

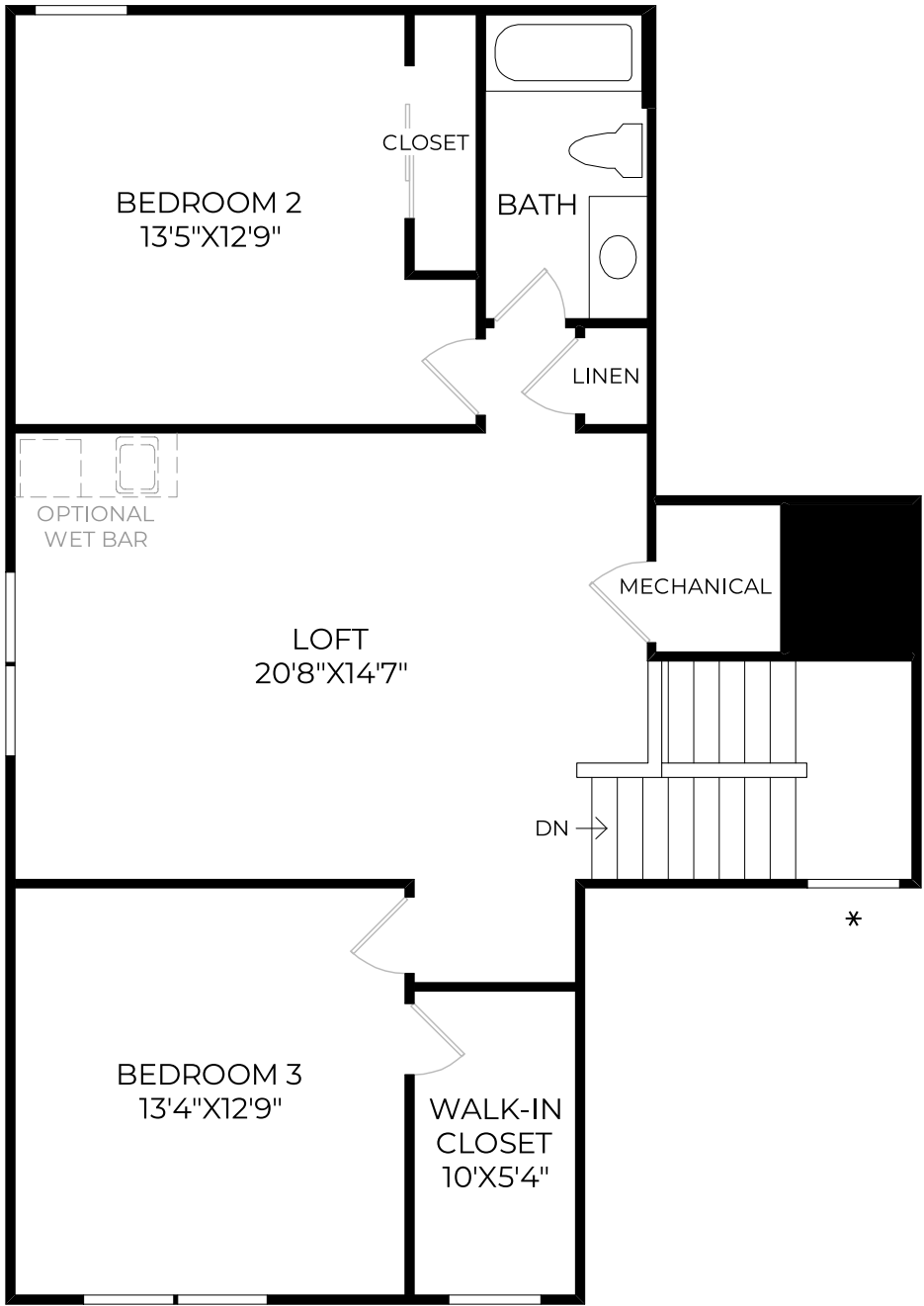
WH

STEPS FROM HOME TO GARAGE/ PORCH/ PATIO MAY VARY DUE TO SITE CONDITIONS.

2-CAR GARAGE  
22'X20'4"

PORCH  
12'8" CEILING

9'4" CEILING HEIGHT



\* DENOTES HIGH WINDOW

8' CEILING HEIGHT